

South Carolina Department of Alcohol & Other Drug Abuse (DAODAS)

REPORT OVERVIEW

Each year since 2005, an annual South Carolina Prevention Outcomes Report has been commissioned by the South Carolina Department of Alcohol and Other Drug Abuse Services (DAODAS). The first report covered prevention activities that were funded through the Governor’s Cooperative Agreement for Prevention (G-CAP), a federally funded State Incentive Grant. This evaluation brief represents the 16th Prevention Outcomes Report and covers prevention services that occurred during State Fiscal Year 2020 (July 1, 2019 through June 30, 2020). The FY 2020 report focuses on:

- Prevention Outcomes generated through the pre- and post-testing of students who participated in middle and high school-based prevention programs,
- Data related to county alcohol and tobacco environmental strategies (e.g., compliance checks, bar checks, public safety checkpoints, merchant education, and other enforcement related activity),
- The annual Youth Access to Tobacco Study (SYNAR), and
- The prevention services distributed by Prevention personnel from the 32 AOD agencies representing the 46 South Carolina counties.

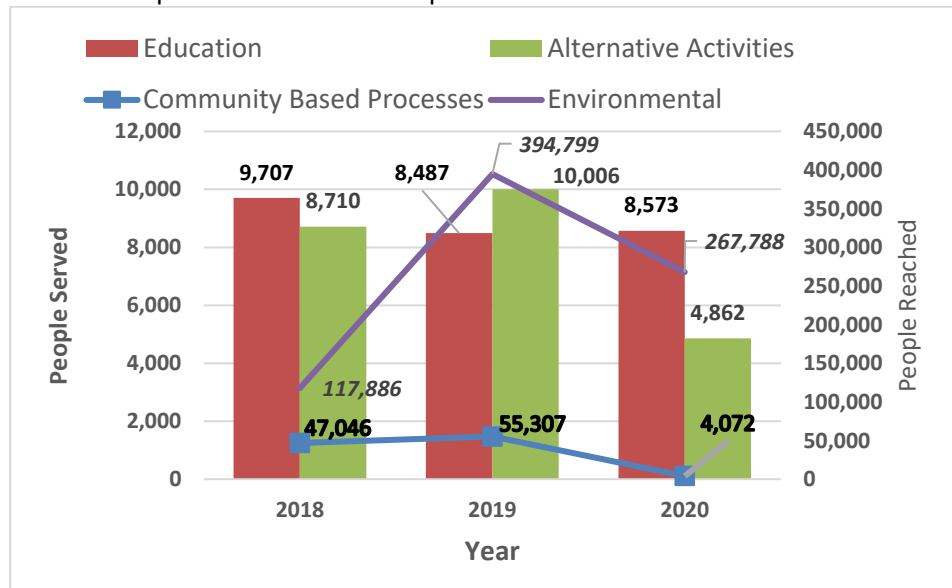
For more information from the full annual report, please see <https://ncweb.pire.org/scdocume>

Prevention providers in South Carolina implement activities across the six CSAP prevention strategies, which are: 1) information dissemination, 2) community-based processes, 3) education, 4) environmental, 5) alternative activities, and 6) problem identification and referral services. Prevention personnel from the 32 alcohol and other drug agencies across South Carolina tracked four of the six prevention strategies in FY2020 through IMPACT, the DAODAS reporting system.

Services Across the Six CSAP Strategies

The chart below depicts a comparison of the data across fiscal years 2018 through 2020. The number of FY'20 Alternative Activities were down from the previous two years; however, Education activities were slightly higher in FY'20 than in FY'19. Likewise, Environmental activities were higher in FY'20 than in FY'19. Community-based Processes were lower in FY'20 than in FY'19 and FY'18.

Not shown in the chart, over 16 million people (duplicate count) received prevention-related information (Information Dissemination), and 604 received problem identification and referral services. The COVID-19 pandemic affected in-person services starting in March 2020 through the end of the fiscal year. Prevention personnel developed and implemented virtual prevention services within a couple of months into the pandemic.



Changes in Substance Use and Risk Factors Among Program Participants

Substance abuse prevention programs are conducted every year in middle schools and high schools across South Carolina and involve thousands of students. Data is collected from participants through the pre- and post-test DAODAS Standard Survey. The survey was modified in FY'19 so that middle school and high school students received different versions. Prevention personnel implemented the new survey in FY'20, and data was collected from 1,833 middle school and high school students, down 13.7% from FY'19.

The figure below depicts the results of risk-factor measures from the pre-post test surveys at the beginning and end of the school-based curricula among high school and middle school students in FY'20. The second figure on this page is similar but reports substance use rates for pre-and post-test surveys.

Overall Results, Risk-Factor Measures, Middle and High School, FY '20

Risk-Factor Measure (All Scale Scores Range from 0 – 3) ^a	Middle School			High School		
	Pre- Test Average	Post- Test Average	Percent Change	Pre- Test Average	Post- Test Average	Percent Change
Perceived Risk	2.24	2.33	3.99**	2.08	2.19	5.19**
Decision-Making	1.92	1.89	-1.41*	1.82	1.87	2.46
Disapproval of Use	2.61	2.62	0.34	2.10	2.19	4.24**
Perceived Peer Norms	2.42	2.45	1.29*	1.62	1.82	12.37**
Perceived Parental Attitudes	2.81	2.80	-0.12	2.53	2.55	0.68

^a Higher scores are more favorable.

* Pre- and post-test averages are marginally significantly different (p<.10).

** Pre- and post-test averages are significantly different (p<.05).

Green cell denotes significant reduction in risk; red cell is significant increase in risk.

Overall Results, Substance Use Rates, Middle and High School, FY '20

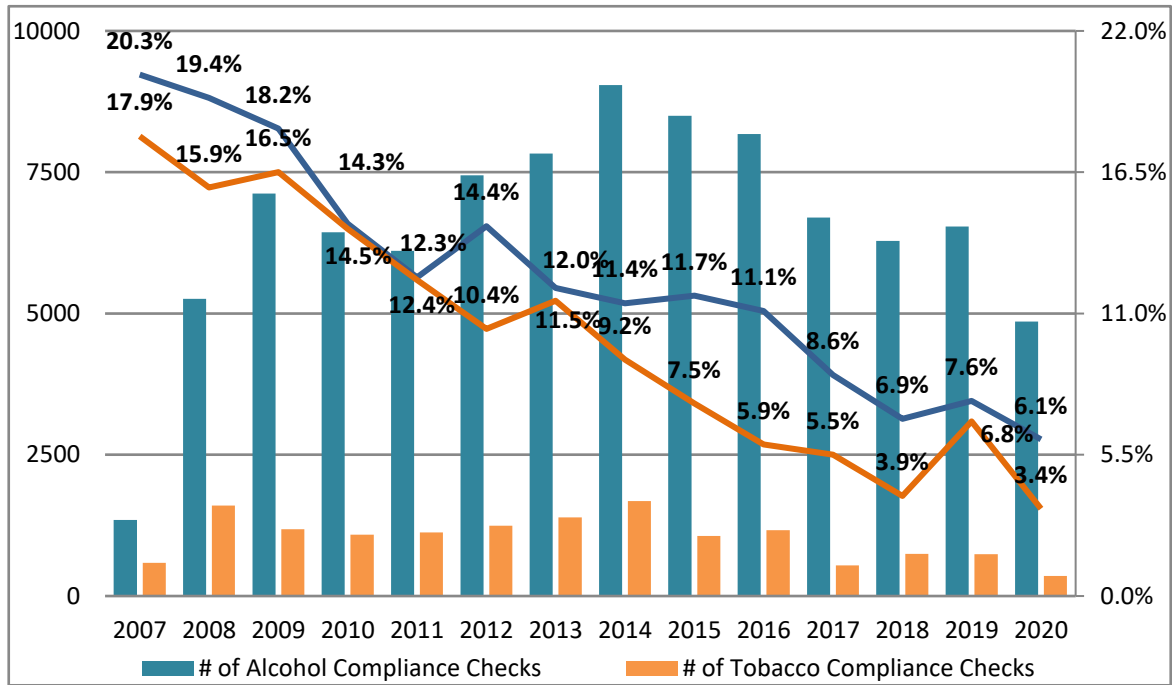
Substance ^a	Middle School			High School		
	% Using at Pre- Test	% Using at Post- Test	Percent Change	% Using at Pre- Test	% Using at Post- Test	Percent Change
Other Tobacco	1.14	1.61	41.23	5.04	3.49	-30.75
Cigarettes	0.89	1.34	50.56	10.89	9.69	-11.02
E-Cigarettes or Vapes	6.53	1.41	-78.41**	22.62	18.43	-18.52 *
Alcohol	4.01	5.89	46.88**	19.38	14.06	-27.45 *
Marijuana	2.16	4.16	92.59**	26.36	19.07	-27.66 **
Non-Medical Prescription Drugs	2.80	3.07	9.64	6.98	5.43	-22.21
Binge Drinking (past 2 weeks)	2.62	0.90	-65.65**	6.32	4.38	-30.70
Prescription Pain Pills	-	-	-	6.64	4.26	-35.84
Heroin or Fentanyl	-	-	-	0.39	0.00	-100.00
Cocaine	-	-	-	1.56	1.16	-25.64
Other Illegal Drugs	-	-	-	1.57	0.39	-75.16

^a Unless otherwise noted, substance use is measured as past 30-day use. * Pre- and post-test averages are marginally significantly different (p<.10). ** Pre- and post-test averages are significantly different (p<.05). Green cell denotes significant reduction in use; red cell is significant increase in use.

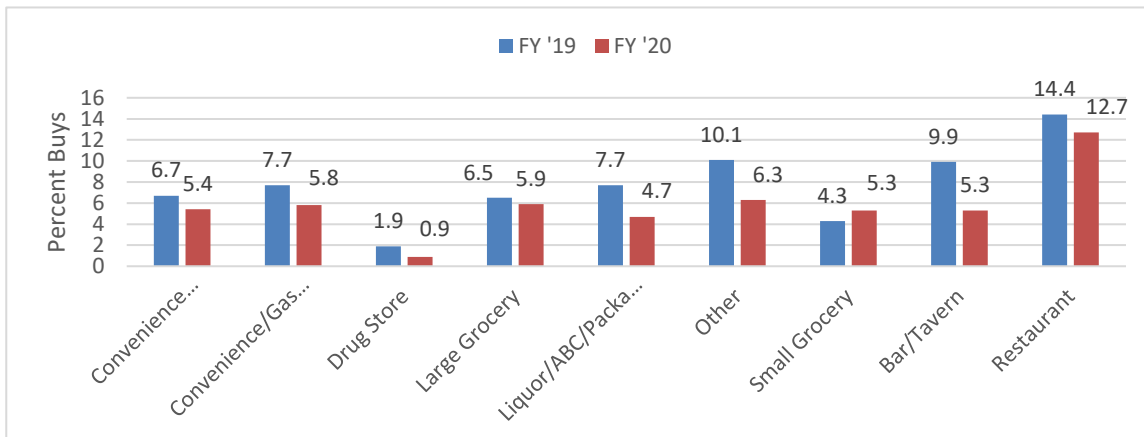
Alcohol and Tobacco Environmental Prevention Strategies

There were 4,858 alcohol compliance checks and 357 tobacco compliance checks conducted in FY'20. Personnel from 35 counties submitted alcohol compliance check forms and personnel from 13 counties submitted tobacco check forms through the online Environmental Prevention Strategies (EPS) Reporting System. The 2020 Prevention Outcomes Annual Report contains specific county information.

The FY'20 totals represent reductions in overall compliance checks from FY'19. The reduction in compliance checks is attributed to the COVID-19 pandemic, which resulted in a state lockdown in mid-March 2020. Even so, law enforcement's alcohol and tobacco compliance checks in FY'20 resulted in the lowest non-compliance (buy) rate ever in South Carolina.



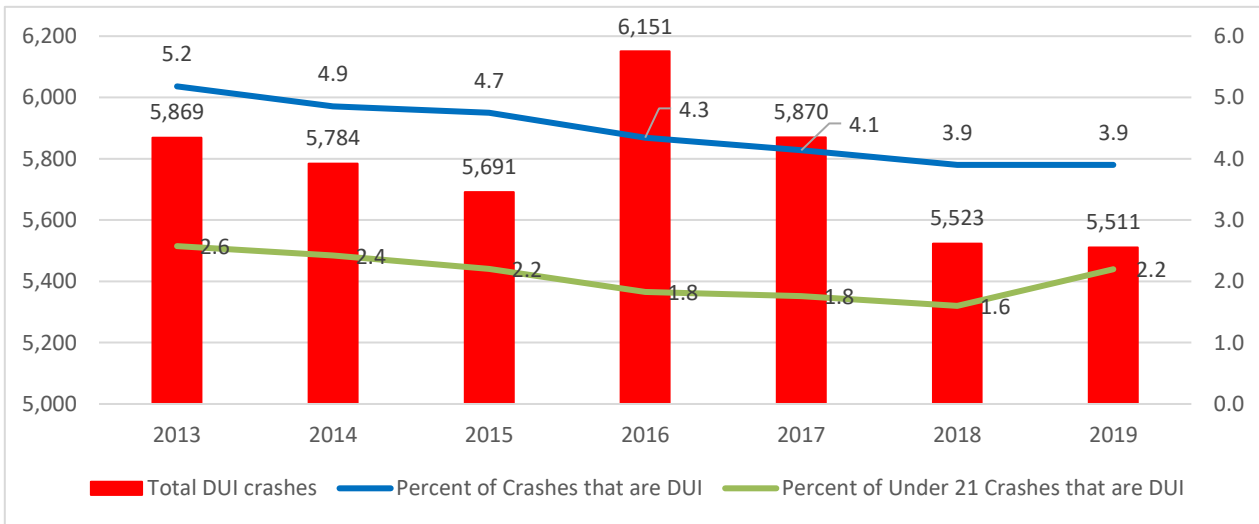
The chart below compares sales in FY'20 to FY'19 by type of alcohol outlet. Buy rates decreased in all but small grocery outlets in FY'20. Additional interesting analyses about compliance checks and other environmental strategies are found in the Prevention Outcomes Annual Report.



Impaired Driving Traffic Crashes

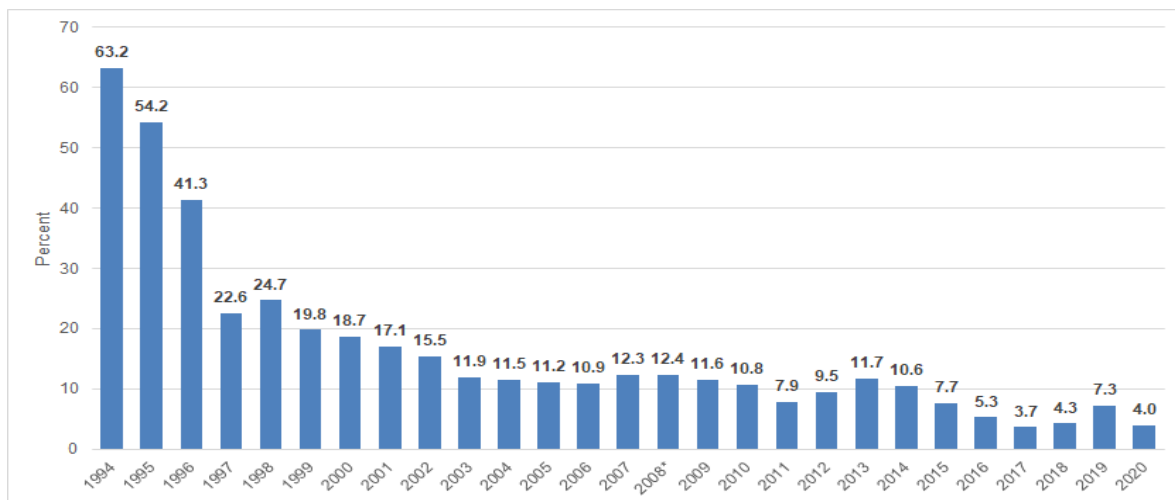
One of the main goals of environmental prevention strategies is the reduction of impaired-driving traffic crashes. In South Carolina, most impaired driving traffic crashes are identified as alcohol-related. However, some impaired driving crashes result from driver impairment due to other substances or, in some cases, polysubstance-use, where alcohol and marijuana, opioids, cocaine, or other substances are combined.

The figure below show that total DUI crashes (red bars) have generally decreased since 2013, other than a spike in 2016 which was commensurate with a spike in overall car crashes. The figure also shows that the percent of crashes that were DUI (blue line) has steadily decreased since 2013. A similar trend is seen for the percent of crashes that were DUI for drivers under the age of 21, except that there was in increase in 2019. Traffic crash data from 2019 are preliminary at the time of this evaluation brief and the full Prevention Outcomes Report.



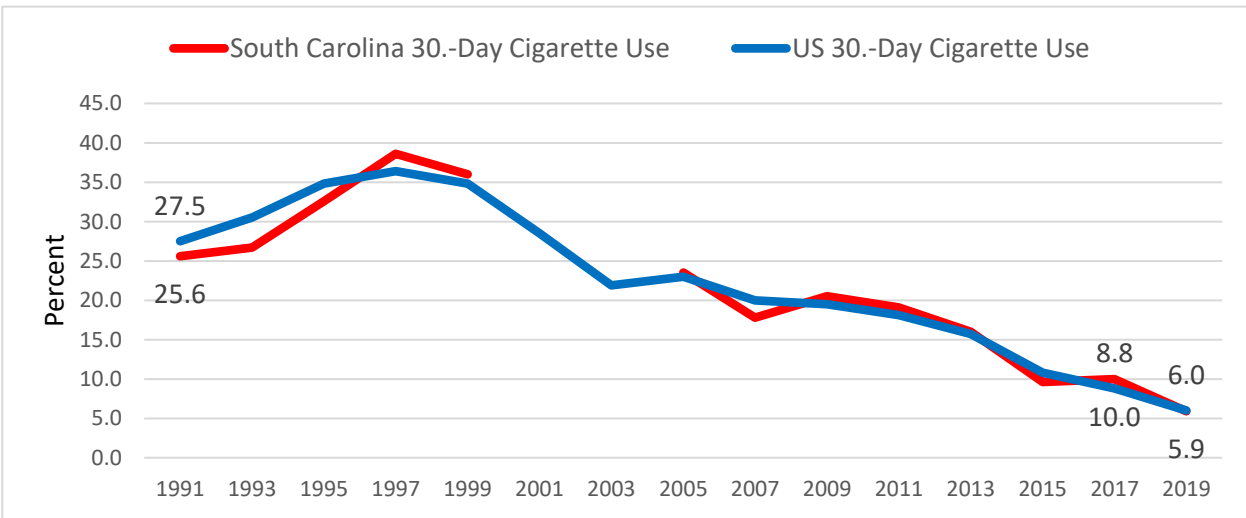
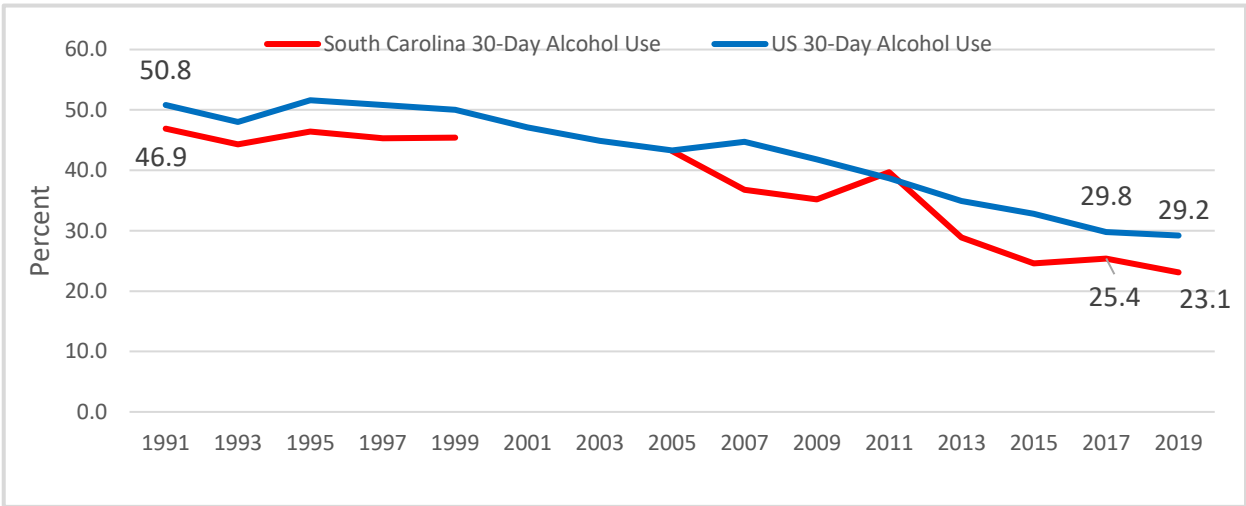
Youth Access to Tobacco Study (SYNAR)

The chart below shows the buy rates from the Synar Study. In 2020, the estimated overall sales rate was 4.0%, which is lower than 2019 and the best rate since 1994.



Statewide Youth Substance Use Trends

The 2020 Prevention Outcomes Annual Report features state-level charts comparing to substance use trends in the United States. The figures below depict past 30-day alcohol use and past 30-day cigarette use across the years of the YRBS. Additional substance use trends are depicted in the complete Annual Report. Monitoring state substance use trends offers a view of changes in that use across time and augments decisions to change prevention efforts to address the trends better. More information about the state effort for the YRBS is found at [South Carolina Youth Risk Behaviors Survey \(YRBS\)](#). Information about the national effort is found at the [Youth Risk Behavior Surveillance System \(YRBSS\)](#).



Center for Substance Abuse Prevention (CSAP) State Block Grant Goals

DAODAS uses various data sets to set statewide substance abuse block grant goals. The table on the next page outlines twelve goals regarding underage alcohol use, alcohol-related crashes, youth tobacco use, youth marijuana use, and youth prescription use. Three of the four alcohol-related goals have been met. Four of the six tobacco goals have been met. The marijuana targets have not been met, possibly related to national surveys that indicate a growing acceptance of the use of marijuana. Overall, seven of the twelve goals have been met when reviewing the most recent data available.

Statewide Substance Use Data and Block Grant Goals

Priority Area	Underage Alcohol Use	Underage Alcohol Use	Underage Alcohol Use	Alcohol-Related Crashes	Youth Tobacco Use	Youth Tobacco Use	Youth Tobacco Use	Youth Tobacco Use	Youth Tobacco Use	Youth Tobacco Use	Youth Marijuana Use	Youth Rx Misuse
Indicator	30-day use	30-day use	Retail access	Alcohol-related fatalities	Retail access	30-day use of tobacco	Retail access	30-day use of cigarettes	30-day use of smokeless	30-day use of vaping	30-day use	Ever used
Data Source	YRBS	CTC	EPRS	FARS	Synar	YRBS	EPRS	CTC	CTC	CTC	YRBS	YRBS
Baseline	23% (2017)	16% (2018)	6.9% (2018)	32% (2017)	4.3% (2018)	21.6% (2017)	4.0% (2018)	4.6% (2018)	6.5% (2018)	11.5% (2018)	18.6% (2017)	15.2% (2017)
Year 1 Target	22% or less (2019)	15%	10% or less	31% or less	5% or less	20% or less	5% or less	5% or less	5% or less	10% or less	17% or less	15% or less
Year 1 Data	23.1% (2019)	10.4% (2020)	7.6% (2019)	28% (2018)	7.3% (2019)	23% (2019)	6.8% (2019)	2.4% (2020)	3.2% (2020)	10.8% (2020)	17.9% (2019)	15.6% (2019)
Year 2 Target	21% or less (2021)	14% or less (2022)	10% or less (2020)	31% or less (2019)	5% or less (2020)	20% or less (2021)	5% or less (2020)	5% or less (2022)	5% or less (2022)	10% or less (2022)	17% or less (2021)	15% or less (2021)
Year 2 Data	N/A	N/A	6.1% (2020)	28% (2019)	4.0% (2020)	N/A	3.4% (2020)	N/A	N/A	N/A	N/A	N/A
Legend:												
YRBS = Youth Risk Behavior Survey, conducted at the state-level every two years (odd years).												
CTC= Communities That Care Survey, conducted in select counties, every two years (even years).												
FARS = Fatality Analysis Reporting System, administered by the National Highway Traffic Safety Administration.												
Green cell indicates that most rates met or exceeded the target. Red cell indicates that rates are higher than the baseline rates.												